

1  
2  
3  
4

## Network infrastructure

Enable the high performance levels needed to support students and faculty with reliable connectivity on- and off-site with modern network infrastructure.

- Cabling and fiber
- Router and switch modernization
- Communications solutions
- On-premises servers
- Indoor/outdoor wireless connectivity
- On-premises, cloud and hybrid data center
- Power backup
- Desktop virtualization
- Cloud services
- Wi-Fi enabled cellular routers

## Devices, hardware and software

Equip your network to support efficiency and access with state-of-the-art devices, including PCs and laptops, Wi-Fi-connected printers, smart technology and more.

- PCs, laptops, printers, etc.
- Esports hardware and software
- Support for distance learning and collaboration
- Digital signage
- Projection screens and smartboards

## Physical security and emergency response

Protect students and personnel with proactive and responsive network-connected technologies that secure the premises and enable immediate emergency response.

- Video surveillance
- Perimeter security and access control
- Gunshot Detection Technology (GDT)
- Emergency notifications
- E911

## Cybersecurity

Secure your networks and sensitive data against malicious attacks and internal compromise with built-in cybersecurity solutions.

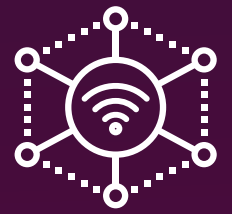
- Security solutions for the network edge
- Internet and email security and spam filtering



Insight has an expert team of professionals who specialize in transforming networks and other technologies for education sector clients.

This group is seasoned in architecting, designing, and implementing reliable and robust networks needed to support critical functions for students and faculty on-site and remote, with built-in security and cost-effective, reliable performance.

## IT modernization benefits



**Internet of Things (IoT)-enabled networks**



**Reliable wired and wireless networks**

- ✓ Increased bandwidth
- ✓ Reliable wireless connectivity with increased coverage
- ✓ Less network congestion
- ✓ More secure network



**Network automation**



**Seamless integration with other technologies and systems**



**Holistic and requirements-driven approach to security**

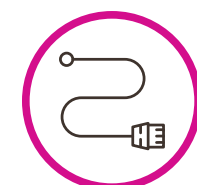
## Why Insight



**Deep expertise**

Our expertise results from successful transformations of networks supporting government agencies and educational facilities, including K-12 and institutes of higher education throughout North America.

- ✓ Deep expertise in network and security solutions
- ✓ 300+ network and wireless projects per year
- ✓ 3,000+ technical certifications
- ✓ Strategic partnerships with all major technology providers
- ✓ Hold major contracts, including OMNIA Partners and other state-specific contracts
- ✓ Develop solutions that are compliant with HIPAA, FIPPs, ITARS, GDPR, CCPA, PCI-DSS, FISMA, NIST 800-53 and others
- ✓ Highly experienced in public sector initiatives, including government and educational projects and management of complex and specific contracts and funding programs



**Fit-for-purpose designs**

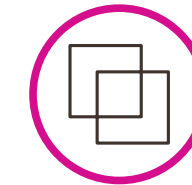
Our physical designs address a holistic set of network requirements for each location:

- ✓ Final wireless design and AP placement
- ✓ Detailed network closet design
- ✓ Networking Bills of Materials (BOMs)
- ✓ Cabling BOM
- ✓ Detailed implementation instructions per closet
- ✓ Physical and network security



**Proven state-of-the-art methodology**

Our methodologies involve standardized, proven processes, with a high degree of flexibility to customize design and delivery to best meet the individual needs of each client.



**Leveraging tailored templates**

These templates use proven methodology and are adapted to meet client needs.

- ✓ Survey templates
- ✓ Design templates



**Targeted surveys and assessments**

Surveys and assessments are focused on current and future needs of the client and facility:

- ✓ Predictive wireless design
- ✓ Wireless surveys and remediation recommendations
- ✓ Wireless design validation (on-site)
  - AP placement
  - Cable pathways and lengths
- ✓ Current infrastructure
  - Closet surveys
    - Cabinets (size/depth), network devices
  - Cabling
    - Copper matrix and fiber identification
  - Environmental
    - Electrical, AC/heat, lighting
  - Backup power



**Dedicated and highly experienced implementation team for modernization**

Our traveling teams are familiar with adjacent systems such as:

- ✓ IoT devices
- ✓ Bluetooth® Low Energy (BTE)
- ✓ Low voltage cabling
- ✓ Physical security installation

Team members are experienced, trained and certified in multiple technologies spanning network infrastructure and educational device and hardware needs.

