

EPOS

EPOS Enterprise Solutions

ADAPT Headset Solutions



Stay Focused with Audio Designed for Your Brain

Designed for the hybrid worker who needs versatile audio solutions and clear communication. The ADAPT Line of headsets built on EPOS BrainAdapt™ technology provides the best conditions for your brain for improved focus in calls and better concentration in noisy environments.

Whether you are in the office, at home, or somewhere in between, audio solutions built on EPOS BrainAdapt™ technology provide rich, crystal-clear sound that is key to increased productivity in the hybrid workplace.

With EPOS BrainAdapt™
you can achieve more with
less brain energy spent

Audio and video solutions built on EPOS BrainAdapt™ technology minimizes the amount of energy it takes your brain to process sound – leading to better performance and improved communication throughout the work day.

Learn more about EPOS BrainAdapt™ technology
eposaudio.com/enterprise/brainadapt



Improved
focus



Better
concentration



Increased
productivity

ADAPT Headset Solutions



ADAPT 600 Series

Over-ear, headset
Wireless Bluetooth®



ADAPT 500 Series

On-ear, headset
Wireless Bluetooth®



ADAPT 300 Series

Over-ear, headset
Wireless Bluetooth®



ADAPT 200 Series

On-ear, single-sided and double-sided,
headset Wireless Bluetooth®



ADAPT 100 Series

On-ear, single-sided and
double-sided wired headset



ADAPT Presence Series

In-ear headset
Wireless Bluetooth®

Take Perfect Audio Anywhere

Wherever your business takes you, the ADAPT Line is made to match your style, with contemporary ergonomic designs that fit today's flexible professional environment. Anywhere, anytime, it's possible to enhance concentration with headsets that provide truly impressive ANC, enabling your team to stay focused on the task at hand.

In the office or on-the-go, the ADAPT Line gives you a range of best-in-class portable solutions, enabling your team to work flexibly with wireless functionality and hassle-free device compatibility. State-of-the-art voice pickup technology enhances speech and eliminates unwanted background noise, in any environment. Not only that, exceptional microphone clarity delivers an excellent audio experience for both speaker and listener.

New Standard of Professionalism Starts With Good Audio

In a hybrid working world, bad audio poses a barrier to professionalism more damaging than a scuffed shoe or weak handshake: 60%* of decision makers believe better sound will help them retain clients, while 71%* believe that it will help prevent lost pitches in the future.

Research by Ipsos and EPOS, showed that 63%* of global end users experience issues during business conversations on a regular basis because of poor sound quality.

26%

Of employees report misunderstanding due to bad audio



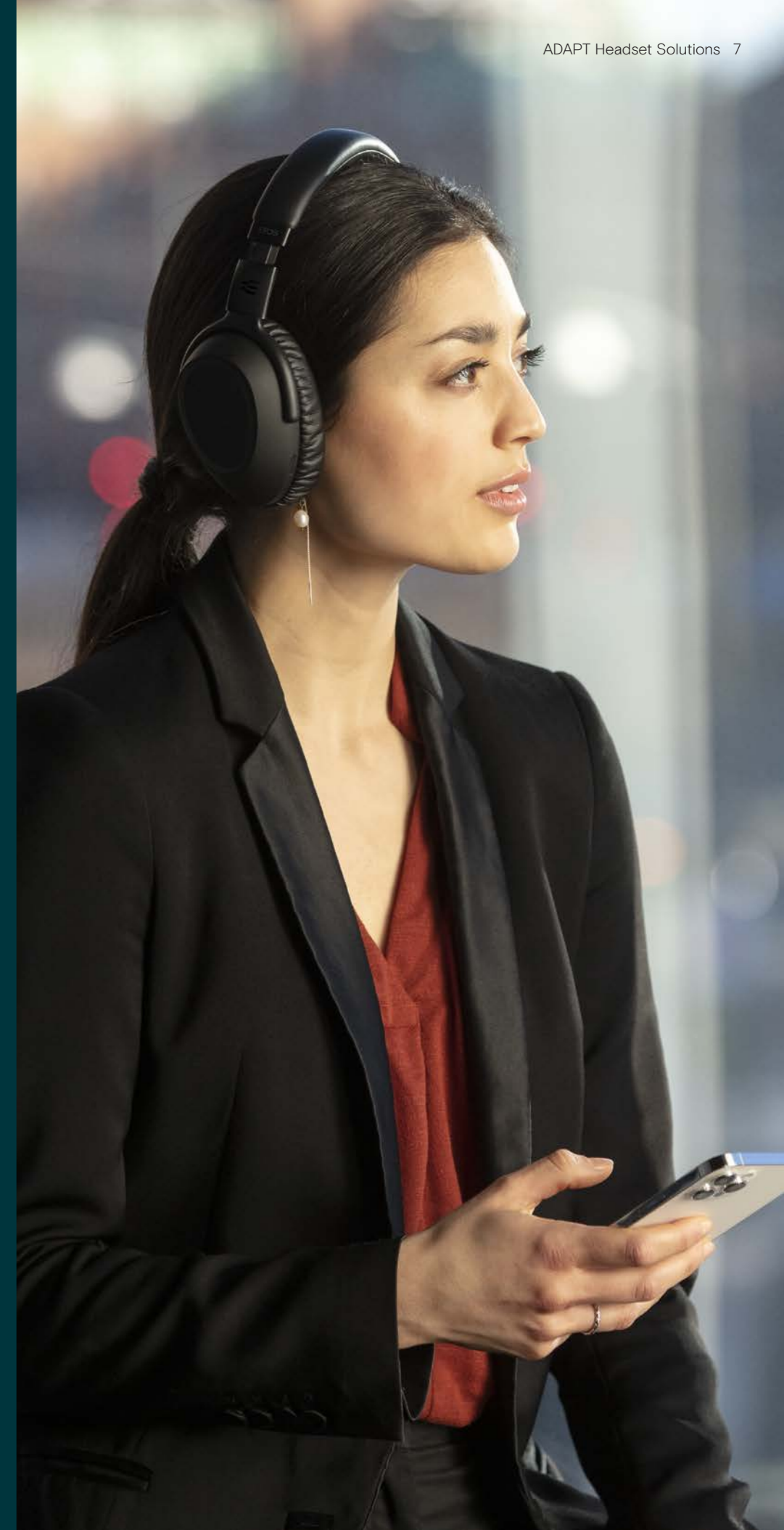
17%

Believe they appear unprofessional due to poor audio



56%

Believe good audio will prevent moments of stress at work



ADAPT 600 Series

Work Whenever, Wherever

Maximize focus and productivity anywhere with a headset powered by EPOS AI™ for personal audio with superb call clarity, stereo sound and adaptive ANC. Enjoy a unique UC optimized solution with machine learning enhanced microphone performance. Adaptive ANC helps you regain concentration by monitoring your working environment and adjusts noise reduction accordingly, even reducing wind noise when outdoors so you can work efficiently whatever your situation. Get straight into collaborative work via a dedicated button that launches Microsoft Teams on your PC via the dongle included. Stay organized with Alexa voice assistant and connect simultaneously to mobile and PC. Whether revitalizing your open office, working on-the-go, or enjoying a relaxed commute, ADAPT 600 boosts efficiency and improves wellbeing for today's mobile workforce.



See more at eposaudio.com/adapt-600

Key Benefits & Features

Superb call clarity powered by EPOS AI™

Machine learning developed algorithms optimize voice pick up, for a natural listening experience from three advanced microphones

Regain concentration anytime, anywhere

Four adaptive ANC microphone system monitors your working environment and adjusts noise reduction in open offices, while reducing wind noise outdoors

Get organized with Alexa

Tap and hold to activate Alexa and stay on top of your day-to-day business. Never miss a meeting and plan your schedule both in and out of the office

Ensure clear calls with UC certified solution

Certified for Microsoft Teams and optimized for UC

Experience superior sound to increase your focus

Renowned stereo sound and a personalized audio profile means you can enjoy high-quality music to help your focus on work



Additional Benefits & Features

Switch effortlessly between your favorite devices

Enjoy multi-point connectivity via Bluetooth® to mobile and softphone simultaneously. BTD 800 USB dongle connects to your PC

Dedicated button for Microsoft Teams

One press launches Microsoft Teams on PC via BTD 800 USB dongle

Stay in touch with your surroundings

EPOS Voice™ technology for listening to colleagues without removing the headset

Enhanced call quality

With advanced sidetone algorithms that remove background noise and improve your call experience

Benefit from 30 hours of battery life*

Reliable performance wherever and however you work

Designed for mobile workers

Fold flat design with rotating ear cups to switch on and off

Simply swipe and tap

Features a touch pad for easy, efficient call and media control

Convenient charging and headset storage

All charging and wired connectivity accessories come in a handy headset carry case

Enjoy high-quality streaming

High-quality streaming with AptX®

Manage updates and settings on-the-go

Get updates and select Voice Assistant and audio profile on the go via the app

* ANC on, Bluetooth® off

EPOS Study Finds that Poor Audio Causes our Brains to Work 35% Harder to Interpret Information

A recent scientific study* has shown that the passive damping technology used in ADAPT 600 Series headsets helps improve cognitive performance.

For today's professionals working in noisy or unnatural sound environments this means that you can stay present and focus longer in

hybrid meetings, reduce stress on your brain trying to understand what's being said and better recall important information.

At the end of a workday, professional audio tools that are designed for the hybrid worker are not only an advantage, but a necessity to perform your best.

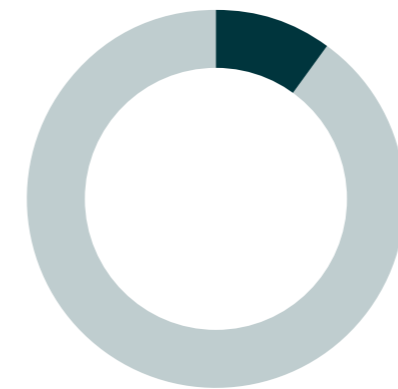
* The effects of noise attenuation on listening effort and arousal *Sindri Jonsson¹, Emil Bjergskov Larsen¹, Torben Christiansen², Elaine Hoi Ning Ng¹, Andreea Micula¹ ¹Oticon A/S, Smørum, ²Denmark EPOS, Ballerup, Denmark

EPOS Passive Damping Improves Performance



35%

less listening effort
Reducing the effort involved in listening in noisy environments



10%

better memory recall
Enabling users to remember important parts of their conversations better



20%

better word recognition
Enabling users to recognize words easier and make sense of the conversation in noisy environments

Read the full Whitepaper [“The effects of noise attenuation on listening effort and arousal”](#).





EPOS AI™ – For a Personalized Audio Experience
Communicate flawlessly thanks to EPOS AI™ that learns the way you speak while studying your environment.



Call and Media Controls Direct From the Touch Pad
Answer/end call, reject, hold, mute/unmute, redial. Play/pause audio playback, change track, volume up or down.



Sound Effect Modes and Adaptive ANC Controls
Create your own audio profile to get the best personalized sound for speech, audio playback and entertainment with sound effect modes. Personalize your own level of noise cancellation.



Bluetooth® Pairing and Control
Instant flight mode (just plug in the audio jack). Bluetooth® on/off. NFC pairing.



Comparison Overview

ADAPT 600 Series



ADAPT 660



ADAPT 661

Art. no.	1000200	1001004
Wearing style		
Double-sided headset	•	•
Headband	•	•
Over-the-ear	•	•
Large pillow-soft leatherette ear pads	•	•
Connectivity		
Softphone/PC	•	•
Mobile phone	•	•
Tablet	•	•
Multi-point connectivity*	•	•
Microphone		
Digital MEMS beamforming microphone (3 microphones)	•	•
Features & technologies		
Hybrid adaptive ANC technology with 4 microphones	•	•
EPOS ActiveGard® technology	•	•
SpeakFocus™ technology	•	•
WindSafe™ technology	•	•
TalkThrough™ technology	•	•
Multimedia	•	•
USB-A dongle	•	
USB-C dongle		•
Carry case	•	•
Unified communications		
Optimized for UC	•	•
Microsoft Teams**	•	•
Alcatel Lucent Certified	•	•

* Connects to two actively paired Bluetooth® devices and eight devices in the pairing list, Bluetooth® 5.0
** Microsoft Teams certification applies when USB-A/USB-C dongle or cable is connected to PC or Mac®.

ADAPT 500 Series

Stay Agile, Achieve More

The 2nd generation ADAPT 500 series introduces a new, low impact headband and softer ear pads for long-term wearing comfort. High-friction, textured fabric improves ear pad fit, elevating user experience when on calls, activating ANC or listening to music.

This on-ear Bluetooth® headset makes it easier to focus in open offices and on the move. A boom arm optimizes voice pick up, guarantying the user's voice is heard and folds seamlessly into the earcup when not in use. Work anywhere with ANC that reduces background noise and supports concentration.

Switch between two Bluetooth® devices using multi-point connectivity and talk for up to 41 hours without recharging. High-quality materials and thoughtful design make this a business-grade audio tool that offers perfected comfort and greater productivity.

See more at eposaudio.com/adapt-500



Key Benefits & Features

Get clearer calls on demand

The sleek, foldable boom arm and two advanced microphones optimize voice pick up for clearer office and mobile calls

Concentrate anytime, anywhere with ANC

Four ANC microphones reduce background noise to support increased focus, together with plush ear pads for good sound isolation

Enjoy all-day wearing comfort

Low impact headband and softer earpads reduce potential pressure points to ensure a comfortable fit in the office or on the go

Ensure clear calls with UC certified solution

Certified for Microsoft Teams and optimized for UC

Slide the boom arm away for a sleek look

The smart and practical boom arm design seamlessly integrates into the earcup and can be retracted when not on a call

Additional Benefits & Features

Switch effortlessly between your favorite devices

Enjoy multi-point connectivity via Bluetooth® to mobile and softphone simultaneously. BTD 800 USB dongle connects to your PC

Launch Microsoft Teams instantly

Dedicated button for Microsoft Teams via BTD 800 USB dongle

Stay in touch with your surroundings

EPOS Voice™ technology enables you to interact without removing the headset

Up to 46 hours battery life

Reliable performance wherever and however you work

Store easily with portable carry case

Compact carry case includes dongle and cable

Comparison Overview

ADAPT 500 Series



ADAPT 560 II



ADAPT 561 II

Art. no.	1001160	1001170
Wearing style		
Double-sided headset	•	•
Headband	•	•
On-the-ear	•	•
Connectivity		
Softphone/PC	•	•
Mobile phone	•	•
Tablet	•	•
Multi-point connectivity*	•	•
Microphone		
2 beamforming MEMS microphones	•	•
Features & technologies		
Hybrid ANC technology with 4 microphones	•	•
EPOS ActiveGard® technology	•	•
Multimedia	•	•
USB-A dongle	•	
USB-C dongle		•
Carry case	•	•
Unified communications		
Optimized for UC	•	•
Microsoft Teams**	•	•
Alcatel Lucent Certified	•	•
Google Meet and Voice Certified	•	•

* Connects to two actively paired Bluetooth® devices and eight devices in the pairing list, Bluetooth® 5.0

** Microsoft Teams certification applies when USB-A/USB-C dongle or cable is connected to PC or Mac®.

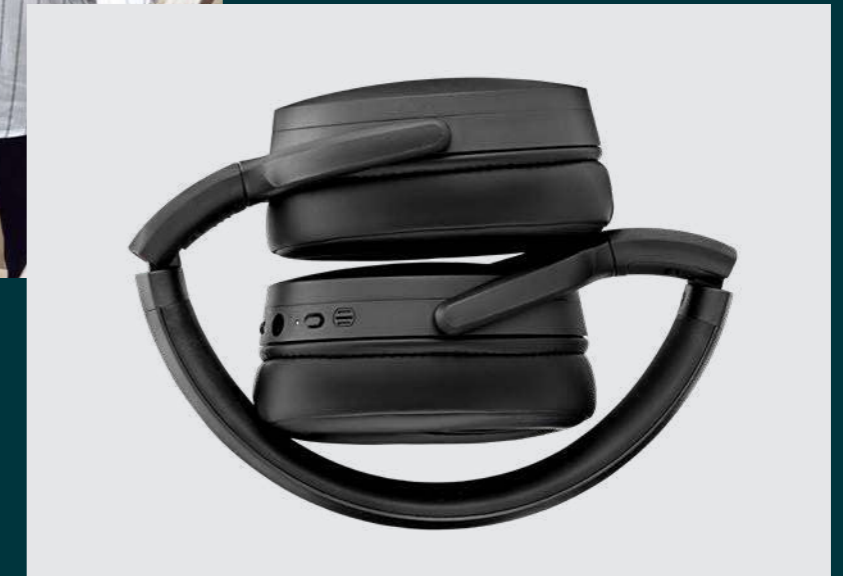
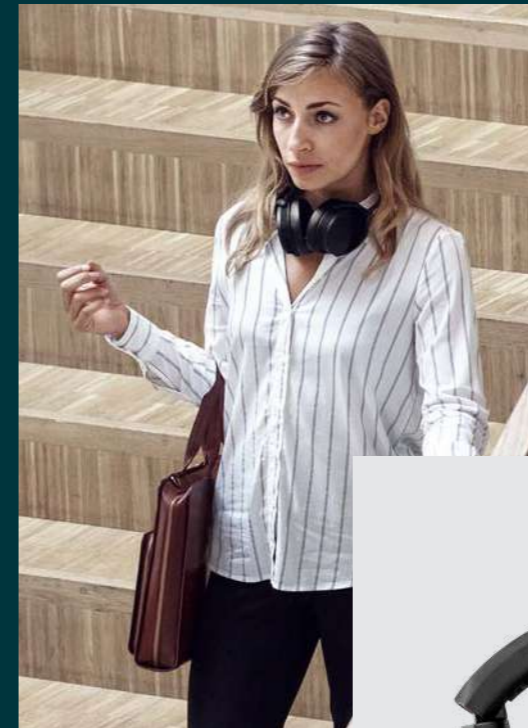
ADAPT 300 Series

Work Your Way in Style

Stay focused with ANC that reduces background noise, helps you concentrate in busy open offices and boosts productivity on-the-go. Ensure clear business calls with a solution optimized for UC and switch easily between devices as you multitask.

Enjoy over-the-ear design and ergonomic ear pads that add noise dampening and long-lasting comfort. Wherever your work schedule takes you, performance and convenience are on hand with up to 46 hours of battery life and foldable design that is easy to store and pack. With the option of EPOS Manager and EPOS Connect software, you can ensure optimal functionality. Insist on a headset with great audio that's built to last and will help you excel in today's workplace.

See more at eposaudio.com/adapt-300



Key Benefits & Features

Concentrate in noisy environments

Thanks to Active Noise Cancellation that reduces background noise to increase your work focus

Ensure clear calls with certified solution

Certified for Microsoft Teams and optimized for UC

Switch effortlessly between your favorite devices

With multi-point connectivity to any two Bluetooth® devices simultaneously

Enjoy stylish, comfortable design

On and off work with a contemporary design and soft, ergonomic ear pads for lasting comfort

High-quality stereo sound and reliable performance

Stream stereo music at work or on your commute and benefit from up to 46 hours of battery life

Additional Benefits & Features

Launch Microsoft Teams instantly

Dedicated button for Microsoft Teams via BT-D 800 USB dongle

Clearer office and mobile calls

From two advanced microphones that optimize voice pick up wherever you are

Reduce distracting noise

Excellent noise dampening from large ear cups

Convenient and extremely portable

Due to a robust, foldable headset design

Protect your headset

With a convenient storage pouch

Benefit from easy charging

Via USB cable with USB-C connector

Firmware updates when it suits you

Via EPOS Manager and EPOS Connect software



Comparison Overview

ADAPT 300 Series



ADAPT 360



ADAPT 361

Art. no.	1000209	1001008
Wearing style		
Double-sided headset	•	•
Headband	•	•
Over-the-ear	•	•
Large thick leatherette ear pads	•	•
Connectivity		
Softphone/PC	•	•
Mobile phone	•	•
Tablet	•	•
Multi-point connectivity*	•	•
Microphone		
2 beamforming MEMS microphones	•	•
Features & technologies		
Active Noise Cancellation (ANC)	•	•
EPOS ActiveGard® technology	•	•
Multimedia	•	•
USB-A dongle	•	•
USB-C dongle	•	•
Storage pouch	•	•
Unified communications		
Optimized for UC	•	•
Microsoft Teams**	•	•
Alcatel Lucent Certified	•	•
Google Meet and Voice Certified	•	•

* Connects to two actively paired Bluetooth® devices and eight devices in the pairing list, Bluetooth® 5.0
 ** Microsoft Teams certification applies when USB-A/USB-C dongle or cable is connected to PC or Mac®.

ADAPT 200 Series

Access Peak Performance Anywhere

If work means calls via multiple devices, choose a wireless headset that fits with your dynamic working style in the hybrid workplace. Lightweight, portable and wireless, this flexible audio companion keeps you at peak performance.

The boom arm gets you closer to the conversation and folds easily into the headband for a clean, modern look. Focus while listening to music at work with stereo sound and jump straight into virtual meetings via a Microsoft Teams certified or UC optimized solution. Enjoy the benefits of a portable, fold-flat audio solution designed to keep you on the move and maximize your comfort while you focus on business. If you have to rise to new professional challenges and environments daily, the ADAPT 200 helps you communicate and collaborate to the best of your ability in style anywhere.



See more at eposaudio.com/adapt-200

Key Benefits & Features

Enjoy flexible connectivity and great audio

Connect wirelessly via Bluetooth® to two of your favourite devices simultaneously and enjoy renowned stereo sound

Maximize your comfort and productivity

With thick, soft, on-ear leatherette ear pads, enabling all-day comfort and passive noise damping

Microsoft Teams certified and UC optimized

Certified for Microsoft Teams and optimized for UC for a seamless user experience that boosts your productivity

Stay stylish with sleek design

Look good at work or on-the-go with contemporary design and a boom arm that folds discreetly into the headband

Extremely portable to keep you moving

With a smart fold-flat ear cup design and carry pouch, simply pack up and move on to your next working task



Additional Benefits & Features

Up to 27 hours battery life

Reliable performance wherever and however you work

Jump straight into Teams meetings

Via dedicated Microsoft Teams button

Optimal call clarity

With noise-cancelling microphone to filter out ambient noise

Enjoy EPOS Voice™ technology

For a more natural listening experience

Get a personalized fit

With an adjustable, flexible headband

Avoid acoustic shock on calls

With EPOS ActiveGard® technology

Smart noise limiter

Enable noise limitation according to European and Australian standards via EPOS Connect



Comparison Overview

ADAPT 200 Series



ADAPT 260



ADAPT 261



ADAPT 231

Art. no.	1000882	1000897	1000896
Wearing style			
Single-sided			•
Double-sided	•	•	
Headband	•	•	•
On-the-ear	•	•	•
Large leatherette ear pads	•	•	•
Connectivity			
Softphone/PC via USB-A	•		
Softphone/PC via USB-C		•	•
Mobile phone	•	•	•
Tablet	•	•	•
Multi-point connectivity*	•	•	•
Microphone			
Noise-cancelling microphone	•	•	•
Hideable boom arm	•	•	•
Features & technologies			
In-line call control unit	•	•	•
Optimized for calls & multimedia	•	•	•
EPOS Voice™ technology	•	•	•
EPOS ActiveGard® technology	•	•	•
USB-A dongle	•		
USB-C dongle		•	•
Carry pouch	•	•	•
Noise at Work, (EU directive)**	•	•	•
Unified Communications			
Optimized for UC	•	•	•
Microsoft Teams Certified***	•	•	•

* Connects to two actively paired Bluetooth® devices and eight devices in the pairing list, Bluetooth® 5.0
 ** In compliance with EU Noise at Work legislation. EU Noise at Work Directive (Directive 2003/10/EC)
 *** Microsoft Teams Certification applies when USB-A/USB-C is connected to PC or Mac®



ADAPT 100 Series

Activate Your Potential

Work your way with a stylish, comfortable headset designed for the demands of today's hybrid workplace with ANC and superior stereo sound. Enjoy an audio tool that adapts seamlessly in the office, on-the-go, or while working remotely.

Experience flexibility and comfort, with a discreet boom arm design that folds neatly away into the headband and plug and play device connectivity. Smart audio technologies built into the headset enable a disruption free workspace. EPOS Voice™ technology and a noise-cancelling microphone optimize your speech and enhance calls. ANC reduces background noise when you need to concentrate, and stereo sound for music while you work helps maintain your focus. With variants optimized for UC and certified for Microsoft Teams you can optimize your performance however and wherever you work.



See more at eposaudio.com/adapt-100

Key Benefits & Features

Microsoft Teams certified and optimized for UC

Get a seamless user experience from variants optimized for UC and certified for Microsoft Teams with a dedicated Teams button

Call quality meets stylish design

Guarantee business grade communication with a discreet boom arm, which folds away simply for a stylish look when out and about

Concentrate wherever you work

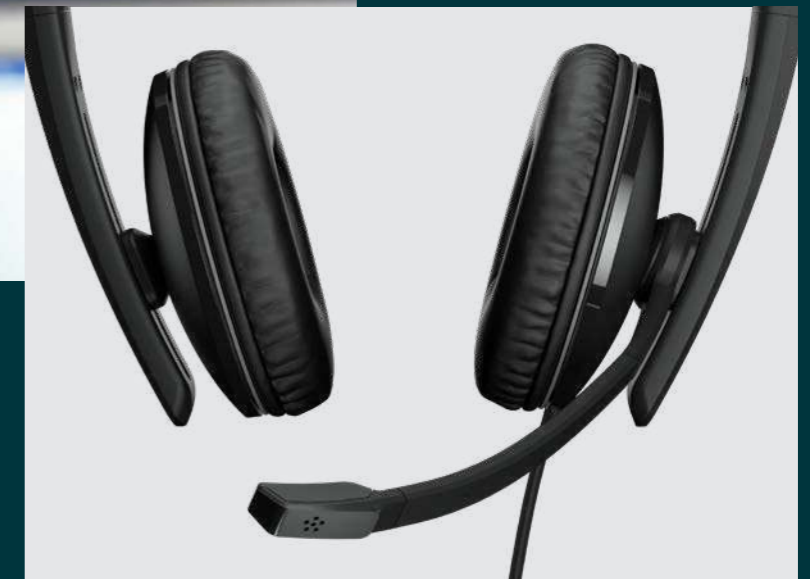
Thanks to ANC, comfortable ear pads and stereo sound, you can focus without disruption whatever your workspace

Plug and play device connectivity

With the 3.5 mm jack USB-A or USB-C connectors, versatile workers on the move and in the office get simple, reliable functionality

Enjoy enhanced comfort

Newly designed, large on-ear leatherette or foam ear pads provide great comfort and noise damping



Additional Benefits & Features

Easy to store and portable

Thanks to an innovative fold-flat ear cup design and carry pouch

Convenient noise limiter switch

Via EPOS Connect limiting noise according to European and Australian standards

One touch access to meetings

Via dedicated Microsoft Teams button (Teams variants only)

Optimize speech clarity

With noise-cancelling microphone to filter out ambient noise

Enjoy a natural listening experience

With EPOS Voice™ technology

Personalize for a perfect fit

With an adjustable, flexible headband

Protect from acoustic shock

With EPOS ActiveGard® technology

Comparison Overview

ADAPT 100 Series



ADAPT 160T ANC USB-C ADAPT 165T USB II ADAPT 165T USB-C II ADAPT 165 USB II ADAPT 165 USB-C II

Art. no.	1000221	1000902	1000906	1000916	1000920
Wearing style					
Single-sided					
Double-sided	•	•	•	•	•
Headband	•	•	•	•	•
On-the-ear	•	•	•	•	•
Large leatherette ear pads	•	•	•	•	•
Large acoustic foam ear pads					
Connectivity					
Softphone/PC via USB-A		•		•	
Softphone/PC via USB-C	•		•		•
Mobile phone via 3.5 mm jack		•	•	•	•
Tablet via 3.5 mm jack		•	•	•	•
Microphone					
Noise-cancelling microphone	•	•	•	•	•
Hideable boom arm	•	•	•	•	•
Features & technologies					
Active Noise Cancellation (ANC)	•				
In-line call control unit	•	•	•	•	•
Optimized for calls & multimedia	•	•	•	•	•
EPOS ActiveGard® technology	•	•	•	•	•
Carry pouch	•	•	•	•	•
Noise at Work, (EU directive)**	•	•	•	•	•
Unified Communications					
Optimized for UC	•	•	•	•	•
Microsoft Teams Certified***	•*	•			
Certified with Chromebook					



ADAPT 135T USB-C II ADAPT 135 USB-C II ADAPT 160T USB II ADAPT 160 USB II ADAPT 130T USB II ADAPT 130 USB II

Art. no.	1000904	1000918	1000901	1000915	1000899	1000913
Wearing style						
Single-sided	•	•			•	•
Double-sided			•	•		
Headband	•	•	•	•	•	•
On-the-ear	•	•	•	•	•	•
Large leatherette ear pads	•	•				
Large acoustic foam ear pads			•	•	•	•
Connectivity						
Softphone/PC via USB-A			•	•	•	•
Softphone/PC via USB-C	•	•				
Mobile phone via 3.5 mm jack	•	•				
Tablet via 3.5 mm jack	•	•				
Microphone						
Noise-cancelling microphone	•	•	•	•	•	•
Hideable boom arm	•	•	•	•	•	•
Features & technologies						
Active Noise Cancellation (ANC)						
In-line call control unit	•	•	•	•	•	•
Optimized for calls & multimedia	•	•	•	•	•	•
EPOS ActiveGard® technology	•	•	•	•	•	•
Carry pouch	•	•				
Noise at Work, (EU directive)*	•	•	•	•	•	•
Unified Communications						
Optimized for UC	•	•	•	•	•	•
Microsoft Teams Certified**	•		•		•	
Certified with Chromebook						

* Pending certification

** In compliance with EU Noise at Work legislation. EU Noise at Work Directive (Directive 2003/10/EC)

*** Microsoft Teams Certification applies when USB-A/USB-C is connected to PC or Mac®

* In compliance with EU Noise at Work legislation. EU Noise at Work Directive (Directive 2003/10/EC)

** Microsoft Teams Certification applies when USB-A/USB-C is connected to PC or Mac®

ADAPT Presence

With ADAPT Presence you get the best of both worlds: You get the benefit of superb sound and your listener gets to hear you clearly – no matter where you're calling from.

ADAPT Presence intelligently adapts to different environments with its 3-digital noise-cancelling microphones that work seamlessly together with EPOS' advanced Own-Voice-Detector, SpeakFocus™ and WindSafe™ technologies to ensure crystal clear audio wherever. From a noisy office, through a windy car-park to your car, Presence takes background noise in its stride and adapts seamlessly to give the consistent listening experience that professional communication demands.

See more at eposaudio.com/adapt-presence



Key Benefits & Features

Hear and be heard. Wherever.

Best in class 3-digital noise-cancelling microphones and noise filtering technologies.

Longest talk time

Up to 10 hours' narrowband and 8 hours' wideband call time between charges.

Call handling made easy

Intuitive on/off and answer/end function with sliding microphone boom arm.

Increased comfort

A flexible choice of wearing styles and optional headband.

Voice controlled

Tap into Siri and Google Assistant and be online at the touch of a button.

Additional Benefits & Features

Convenient storage – carry case for headset, dongle and USB charging cable

Multi-connectivity – seamlessly switch between PC/softphone and mobile calls

Increased range – up to 25 meters depending on device and environment

Lightweight iconic design – looks as good as it sounds

Comparison Overview ADAPT Presence Series



ADAPT Presence Grey UC

Art. no.	1000660
Wearing style	
Single-sided headset	•
Ear hook or ear sleeve	•
Headband	[.]
Connectivity	
Softphone/PC	•
Mobile phone	•
Tablet	•
Multi device connectivity*	•
Microphone	
3 digital noise-cancelling microphones	•
Features & technologies	
Advanced Own-Voice-Detector	•
SpeakFocus™ technology	•
WindSafe™ technology	•
EPOS ActiveGard® technology	•
USB-A dongle	•
Carry case	•
Charger stand	[.]
Unified communications	
Optimized for UC	•
Skype for Business Certified	•

[.] Available as optional accessories. ADAPT Presence headband (Art. no. 506476), CH 20 MB headset charger stand (Art. no. 506039)

* Connects up to two devices at the same time



ADAPT Solutions

Comparison Guide



Our Sound Technologies

Innovation You Can Hear

EPOS Technology

We divide our technologies into 3 subcategories: EPOS AI™, EPOS Sound™ and EPOS Voice™ to ensure a clear understanding of our technical spectrum at all ends. Our technologies span over the range of Artificial Intelligence to Sound Experience and Microphone Performance.

EPOS AI™ – Creates an optimized audio experience

Through our commitment to exploring the Power of Audio we have developed an optimized audio experience that pushes your communication further and boosts your ability to succeed. With our user in mind, we implemented EPOS AI™ – a machine learning system embedded in EPOS audio devices that processes audio and takes decisions independently. By interacting with advanced beamforming and noise reduction algorithms, this system enables the device to automatically adapt to your speech while studying your sound environment. The technology within EPOS AI™ then successfully reduces the ambient sounds in your environment, thus, transmitting your speech loud and clear to your listener – where it matters most.

We aim to stay at the forefront of what is technically possible. With the ADAPT 660 we have launched the first edge AI based headset in the entire UC space, thus laying the groundwork to be pioneers within audio technology.

EPOS Sound™ – Sound as if you were right there

EPOS Sound™ makes the most out of your premium audio device by delivering a natural listening experience. Through continuous monitoring of ambient sound and varying noise levels, our technology helps you concentrate while taking care of your hearing: creating an augmented and immersive audio experience that sounds as if you are speaking to someone face-to-face or are right there in the same environment. No matter where you are. What's more, you can listen to your teammates or keep an ear out for announcements without removing your headset. For more focus, block out background noise with ease and enjoy the benefits of EPOS Sound™ – while watching your performance and energy levels rise.

EPOS Voice™ – Be understood in any environment

EPOS Voice™ improves your speech intelligibility and provides for a better conversation by creating an acoustic lens to focus on your speech. Through removing remaining noise disturbances, it ensures a more natural reproduction of the human voice. EPOS Voice™, furthermore, recognizes your environment in order to eliminate unpleasant background noise to clarify your sound picture. Making sure you can be heard no matter where you are – for the ultimate audio experience. With optimal control of noise levels, this technology allows for an effortless use of your digital voice assistants anytime, anywhere.



EPOS Voice™ Technology

The Natural Listening Experience



For the best possible communication between caller and listener, EPOS Voice™ technology uniquely enhances the most important frequencies and details of the human voice. For the caller, sound is crisper and clearer, allowing them to hear the

nuances contained in spoken conversation; for the listener, a noise-cancelling microphone sends the clearest signal to improve speech intelligibility. In combination this results in better, more natural sounding conversations where no important details are lost.



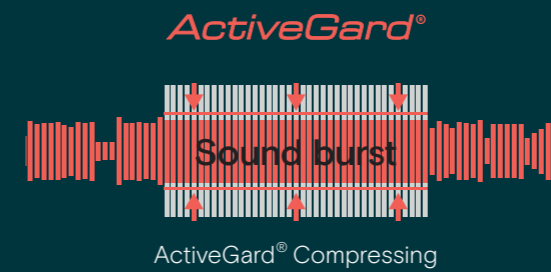
Play sound without EPOS Voice™



Play sound with EPOS Voice™

EPOS ActiveGard® Technology

Hearing Protection



During the course of a day, headset users may be exposed to seldom, but hazardous incoming noises that can be dangerous to their hearing. Technically referred to as a sound burst, this can potentially cause long-lasting damage to the human ear.

To safeguard users, all EPOS headsets for contact center and office environments are equipped with innovative EPOS ActiveGard® technology.



Play sound without EPOS ActiveGard®



Play sound with EPOS ActiveGard®

Please be warned that the sound without EPOS ActiveGard® can be extremely high. We recommend the volume should be set low when playing.

SpeakFocus™ Technology

The ADAPT Presence and ADAPT 600 Series headsets automatically adapt to environmental differences to deliver the best sound possible with the help of SpeakFocus™ and WindSafe™ technologies.



WindSafe™ Technology



You never know when that important call will come. Be confident that wherever you take it – on the road, on the street or in the check-in queue, your voice can be clearly heard. SpeakFocus™ technology focuses on your voice to deliver a crystal clear sound that enhances speech intelligibility for your listeners.

The unique 3 digital microphone system in the ADAPT Presence and ADAPT 660 headsets focuses on the target sound

– your voice – to deliver a calm, steady sound picture, which enhances voice intelligibility for listeners.

SpeakFocus™ technology ensures that your listener receives all the important details of your call to reduce misunderstandings – no matter where you are calling from. The technology zooms in on your voice, works in all sound environments and adapts intelligently whatever the environment.

Wind noise can make it hard to hear what people are saying on the phone. However, it's the sender that causes the problem not the receiver. Even the best microphones can suffer during breezy conditions, making sound and voices indistinct and difficult to understand. With WindSafe™ technology, you can be sure that your listener won't be troubled by wind noise and that your message gets through, no matter what the weather forecast says.

WindSafe™ technology reduces wind noise

to ensure the clearest possible sound is sent to your listener. By choosing the best mix of three microphones and processing the sound, WindSafe™ technology finds the best way to balance and enhance the user's voice when speaking outside in windy conditions.



Play sound without SpeakFocus™



Play sound with SpeakFocus™



Play sound without WindSafe™



Play sound with WindSafe™

EPOS Digital Solutions

Empower Your Business Anywhere

Save valuable time and make life simpler and smarter for your IT department, your business and your colleagues. By keeping you in touch with all your EPOS devices, EPOS Manager puts you in control of your company's UC environment in three key areas:



Asset Management

Get the overview

See all your devices on the dashboard; from headsets to speakerphones and even non-EPOS devices. All users are registered in the system, which shows both active and inactive devices – who is using which device and how they are being used. Simply reallocate redundant resources to boost productivity. Reports on usage and firmware compliance keep you in complete control of company assets.



Update Management

Less downtime, more convenience

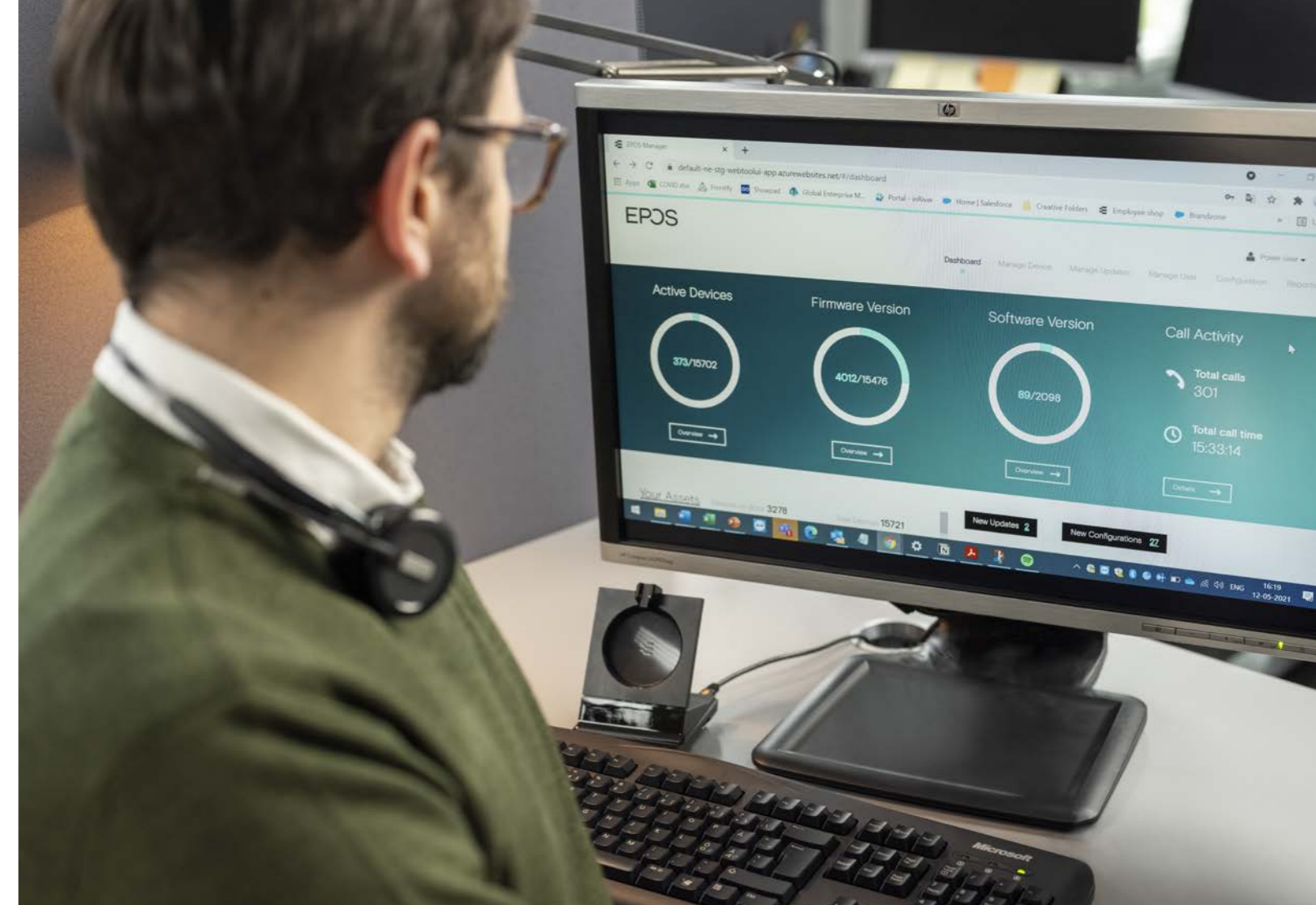
A flexible and cost-effective way to get the latest firmware updates to all your organization's EPOS devices, whenever it's convenient for you and your end-users. Push new updates to an unlimited number of devices across your organization from one simple dashboard. Schedule your automated updates to cause minimum downtime and disruption to your company's workflow.



Configuration Management

Easy for you, easy for end-users

The centralized configuration option allows all settings to be controlled from the IT department, ensuring that headset user's experience a simple plug and play solution. You can centrally push configurations or lock specific specifications on EPOS devices to comply with regulatory compliance settings for specific groups or individuals.



EPOS Manager for IT Administrators

EPOS Manager has been developed for companies with a need to control their UC environment in a fast and secure way. By installing the client application, EPOS Connect, on your end users' PCs, you gain a complete overview of all deployed devices and access to new updates and settings.

For companies with several locations, it's possible to manage, update and control settings for all end-users in the entire organization. For improved security, all communication and data are encrypted and no sensitive data is stored.

The resulting simplification of the asset, update and configuration management gives great savings in both time and money.

EPOS Connect for Headset and Webcam Users

EPOS Connect is the client application running in the background on the headset or video user's PC. The solution ensures that EPOS work seamlessly with various leading softphones and give you access to the latest firmware updates and personalized settings.

EPOS Connect is uniquely configured to either work together with a signed-up company account on EPOS Manager or as a stand-alone application for smaller companies or personal use.

Designed to be simple to use, the application allows EPOS headset, video and speakerphone users to enhance and personalize their experience and productivity simply and quickly.

Service and Support

We've got you covered



On-premise support

Have our highly skilled support team come on site for troubleshooting

Remote support

Receive support remotely and at any time to identify and solve your issues

Round-the-clock, Monday to Saturday

Request support:

eposaudio.zendesk.com/hc/requests/new

Additional support services:

- 2 years full warranty on all devices
- More than 600 help tools
- Quick guides, manuals, how-to videos, articles

Find out more:

eposaudio.com/enterprise/support

E-mail:

contact@eposaudio.com



Experience EPOS

Try our audio solutions first hand

The EPOS professional trial program gives you the opportunity to test and experience our range of headsets and speakerphones before you decide on the best choice for your office, contact center or Unified Communication solution.

eposaudio.com/try



Glossary

Sound Quality

SpeakFocus™ technology ensures that your listener receives all the important details of your call to reduce misunderstandings – no matter where you are calling from. The technology zooms in on your voice, works in all sound environments and adapts intelligently whatever the environment – for instance in the car, in the office, at a seminar or at the airport.

WindSafe™ technology reduces wind noise to ensure the clearest possible sound is sent to your listener. By choosing the best mix of three microphones and processing the sound, WindSafe™ technology finds the best way to balance and enhance the user's voice when speaking outside in windy conditions.

TalkThrough™ Technology gives you the option of being able to listen to your colleagues or keep an ear open for announcements – without removing your headset.

Wideband audio technology operates in the extended frequency range of 150–6800 Hz and offers higher quality speech transmission than narrowband. To be able to use wideband, all components of the communication line must support this standard (PPX, mobile network operator etc.).

Noise-cancellation technology is incorporated in our microphones to reduce background noise, filter out disturbing ambient noise and enable crystal clear telephone conversations. On certain models in our range we offer ultra-noise cancelling microphones, which are able to improve voice transmission in particularly noisy environments.

Hearing Protection

EPOS ActiveGard® hearing protection technology protects users from the potential danger of acoustic injury from unexpected and sudden sound bursts on the line. EPOS ActiveGard® is like a fast-acting intelligent volume control. If an incoming signal rises to a level that is harmful to your hearing, it is instantly reduced to a lower, and more comfortable level. When the sound level returns to normal, the volume returns to the original level.

Noise at Work Limiter

Directive 2003/10/EC The objective of this Directive is to lay down minimum requirements for the protection of workers from risks to their health and safety arising or likely to arise from exposure to noise and in particular the risk to hearing. The Directive defines the physical parameters that serve as risk predictors, such as peak sound pressure, daily noise exposure level and weekly noise exposure level. It sets exposure limit values and exposure action values in respect to the daily and weekly noise exposure level as well as peak sound pressure. The exposure action value is fixed at 80 decibels (lower value) and 85 decibels (upper value). Source: www.osha.europa.eu/en/legislation/directives/82

Unified Communications

UC Optimized means that headsets and speakerphones are compatible with major Unified Communications platforms and softphone brands. Unified Communications brings together a company's voice, text and video based communication under one unified solution. The advantages of a Unified Communications solution include enhanced overall efficiency of a business through increased productivity and mobility, resulting in a positive return on investment.

Skype for Business Certified means that products are certified for Skype for Business. Headset and speakerphones have been fully tested to ensure compatibility with Skype for Business and Microsoft® Office 365. You can simply answer or end calls, adjust volume, or mute calls through the headset or speakerphone's call control features.

Microsoft Teams Microsoft Teams Certified means that products are certified for Microsoft for Teams. Headset and speakerphones have been fully tested to ensure compatibility with MS Teams.

Wearing style

Single-sided headsets are ideal for situations where you need to both hear your caller clearly, and pay attention to what's going on around you.

Double-sided headsets delivers calls in quality sound while reducing background noise – ideal for contact centers, where you need to focus solely on your caller.

Wireless Technologies

Bluetooth® technology is a global radio transmission standard, which supports the application of a wide range of wireless electronic devices. The technology connects devices over a distance of up to 100 meters in line of sight, depending on the Bluetooth® class and device.

Bluetooth®

Frequency	2.4 GHz
Range	Typical office environment: Up to 25 m/82 ft* Line of sight: Up to 100 m/328 ft
Connectivity	Mobile phone, tablet and/or PC (via dongle)

*device dependent

Choose the Right Headset

You need your device to work seamlessly with your headset. It's that simple. EPOS headsets are designed to cover every possibility.

Check our headset compatibility guide at: eposaudio.com/compatibility



Device/Connectivity



Softphone/Mobile phone/PC – Connection via USB-A/USB-C cable or USB dongle (Bluetooth®) to Microsoft Windows or Apple Mac OS



Desk phone – Connection via multiple types of cables



Mobile phone – Connection via Bluetooth® or 3.5 mm jack cable



Tablet – Connection via Bluetooth®, 3.5 mm jack cable or USB depending on tablet.



Telecoil – Works with all standard telecoil-equipped hearing aids.

THE POWER OF AUDIO

EPOS

EPOS Group A/S
Industriparken 27
2750 Ballerup, Denmark
eposaudio.com